



Webb Happenings Newsletter

Corri Nastasi, Principal

corri.nastasi@myhpsd.org

248-658-5900

January 5, 2026

Reading at Home - 30 Minutes - Every Student - Every Day



Important Dates

1/5/26 - PTA Meeting 3:30PM

1/7/26 - Webb Bagel Day - Bagels on sale for \$1.25

1/13/26 - Build up the Park Parent Series @ Webb: Topic: Navigating Tech & Child Wellness 5:30PM

1/19/26 - No School for students - Staff PD Day

1/28/26 - Webb Science Night

1/23/26 - Half Day - Students dismissed @ 11:20AM - Records Day PM

1/28/26 - Report Cards go home

1/29/26 - Student of the Month Breakfast 7:30AM

2/2/26 - PTA Meeting 3:30PM

2/12/26 - Webb Talent Show 6PM @HPJH

2/13/26 - Half Day - Students dismissed at 11:20 (Winter Break)

2/16/26 - 2/20/26 - Winter Break

2/23/26 - Students Return

2/26/26 - Student of the Month Breakfast 7:30 PM

From the Principal

Dear Webb Families,

Happy New Year! I hope you all enjoyed some extra time with your kids these past two weeks. We are all ready to get back to learning this week and we hope the kids are too. Please remember how important it is to get back into regular sleep routines. Our kids need this so much. I cannot tell you how many times I am dealing with students with behavior issues and then it comes out that they were up late or are overtired for one reason or another. I feel that in myself as an adult when I am sleep deprived, and I see it in my own kids when they have been up late. Sleep plays an important role in learning and behavior. A parent once gave me some great advice when she was talking to me about having her kids read each night at home. She said, "Sometimes we fall off the horse, but the next day we get back on and try again. There are going to be days when you can't make it work, but the important part is you don't stop trying". There are going to be random late nights here and there for one reason or another, but the important part is that that is the exception and not the rule. As we get into the new year, I am hoping you will support your kids and get into consistent routines for good healthy sleep. When our sleep expert came in a few years ago to talk with our families she said kids this age need 10-12 hours of sleep for their bodies and brains to do the growing that is needed. With school starting at 8AM, that would mean bedtime should be around 8PM. I think you would be surprised at how much better your kids will feel and how much

easier it will be to get them up and going in the morning. We look forward to working with you to have a successful second half of the school year.

Sincerely,

Corri Nastasi

Principal, Webb Elementary

Reading at Home - 30 Minutes - Every Student - Every Day

YMCA SportPort

The next SportPort event will be January 15th, 2026.

Student of the Month

Congratulations to the following students who were chosen as the student of the months for their classroom for the month of January. The student of the month breakfast for January will be held on Thursday, January 29th at 7:30AM.

Ms. Watts Y5s	Andrew Laizure
Mrs. Platt K	Harmony Cooper
Mrs. Wilkins K	Quincy Moore Jr.
Mrs. Kroneck 1	Kieran Czebatol
Ms. Platt 1	Layah Ficklin
Mrs. Burgess 2	Raelynn Geiger
Mrs. Corso 2	Jacob Spencer
Mrs. Thomas 3	Zyaire Appling
Mrs. Tschirhart 3	Gabriel Hernandez-Lungu
Ms. Snyder 4	Shaya Owdish
Mrs. Brew 4	Zihair Hollaway
Mrs. Hazen 5	Jayden Henderson

Cold Weather

We want to remind you about the importance of sending your child to school with warm jackets, etc. We try to go out for recess as much as possible so the students get some fresh air and exercise. The cutoff temperature is 20 degrees with wind chill factored in. Please make sure that your child brings appropriate gear to school to keep them warm during outside recess. If there is snow on the ground the students will ONLY be allowed to play on the playground if they have winter boots on. If they don't have boots they must stay on the sidewalk area. We do have some donated winter items if your child is in need - reach out to the school office to see if we have any items that would fit.

Bagels

We sell bagels on WEDNESDAYS this year. We offer salt, plain, cinnamon raisin & onion. Students who are late will NOT be allowed to buy a bagel unless they have a doctor's note for their tardiness. The cost of the bagels is \$1.25. Please keep in mind that all proceeds from these sales support our positive behavior celebrations throughout the year.

January Lunch Menu

January 2026

Webb Elementary

Lunch

MONDAY	TUESDAY	WEDNESDAY	THURSDAY	FRIDAY
5 Lunch <ul style="list-style-type: none">Sweet & Sour Chicken MeatballsGrilled Chicken SandwichWowbutter & Jelly Sandwich Fun Lunch	6 Lunch <ul style="list-style-type: none">Beef NachosTurkey Ham & Cheese Bagel MeltCheez-Its, Cheese, & Grapes Fun Lunch	7 Lunch <ul style="list-style-type: none">Boneless Chicken WingsBacon CheeseburgerPopcorn Chicken SaladFlatbread Pieces	1 8 Lunch <ul style="list-style-type: none">Oven Roasted Chicken DrumstickCheesy Italian Pull ApartMuffin, Yogurt & Cheese Fun Lunch	2 9 Lunch <ul style="list-style-type: none">Whole Grain French Toast SticksChicken Sausage PattiesCheese PizzaWowbutter & Jelly Sandwich Fun Lunch
12 Lunch <ul style="list-style-type: none">Chicken & Vegetable DumplingsFiestada PizzaWowbutter & Jelly Sandwich Fun Lunch	13 Lunch <ul style="list-style-type: none">Baja Beef Rice BowlCheese Stuffed BreadsticksMuffin, Yogurt & Cheese Fun Lunch	14 Lunch <ul style="list-style-type: none">Macaroni and CheeseClassic Cheeseburger in BunPopcorn Chicken SaladFlatbread Pieces	15 Lunch <ul style="list-style-type: none">BBQ Pulled Pork SandwichChicken PattyCheez-Its, Cheese, & Grapes Fun Lunch	16 Lunch <ul style="list-style-type: none">Whole Grain WafflesChicken Sausage PattyPepperoni PizzaWowbutter & Jelly Sandwich Fun Lunch
19	20 Lunch <ul style="list-style-type: none">Walking Beef TacoBLT BurgerWowbutter & Jelly Sandwich Fun Lunch	21 Lunch <ul style="list-style-type: none">Mashed Potato & Chicken BowlTurkey Ham & Cheese Bagel MeltPopcorn Chicken SaladFlatbread Pieces	22 Lunch <ul style="list-style-type: none">Cheesy Italian Pull ApartBeef Hot Dog on Whole WheatCheez-Its, Cheese, & Grapes Fun Lunch	23 Lunch <ul style="list-style-type: none">Whole Grain French Toast SticksChicken Sausage PattyCheese PizzaWowbutter & Jelly Sandwich Fun Lunch
26 Lunch <ul style="list-style-type: none">Sweet & Sour ChickenCheese Stuffed BreadsticksWowbutter & Jelly Sandwich Fun Lunch	27 Lunch <ul style="list-style-type: none">Beef Taco MeatTurkey Ham & Cheese SandwichMuffin, Yogurt & Cheese Fun Lunch	28 Lunch <ul style="list-style-type: none">Jumbo Crispy Chicken TendersClassic HamburgerPopcorn Chicken SaladFlatbread Pieces	29 Lunch <ul style="list-style-type: none">Mini Cheese Ravioli with Marinara SauceBBQ Pulled Pork SandwichCheez-Its, Cheese, & Grapes Fun Lunch	30 Lunch <ul style="list-style-type: none">Whole Grain Pancake BitesChicken Sausage PattyPepperoni PizzaWowbutter & Jelly Sandwich Fun Lunch

If you have a food allergy or intolerance, please notify us. Ask your cafeteria manager if changes were made to today's menu so we can help keep you safe!

Menus Subject to Change We try our best to serve our menus as posted; however, sometimes last minute changes occur. Please check with the cafe manager prior to the meal if you have any concerns.

USDA is an equal opportunity provider, employer, and lender. Layout & Design © Nutrislice, Inc. Printed on 1/4/2026 at 9:12 am .



**HAZEL PARK
SCHOOLS**

Early Dismissal

Please be advised that students CANNOT be picked up between 2:30-3:10 each day. This is a district policy. It is very disruptive to the classrooms and to the office to have a constant stream of students being dismissed early. The only exception would be with a doctor's note and must be arranged ahead of time. Please do not come to the door after 2:30 asking for your student to be dismissed early.

Okay2Say

Okay2say is a state police program that allows for anonymous tips about bullying or school threats. We want to empower our students to be "real heroes" by speaking up for what's right. If they see or hear something that threatens their safety or the safety of others, they can submit a confidential tip to [OK2SAY](#).

Cell Phone Use - Elementary - Reminder

Please keep in mind the elementary cell phone policy for Hazel Park Schools. *K-5 Personal devices such as cell phones, MP3 players, smart watches may not be out and/or used during the school day. Devices must be put into a backpack or given to the teacher. Any devices out during the day will be confiscated and available in the office at the end of the day for parent/guardian to pick up. We also want to let you know that we do not have locks for our lockers so any devices left in lockers are not able to be locked up.*


Arrival Procedures - Reminder

School starts at 8:10AM. Classrooms are open inside of school starting at 8:05AM. We do offer free breakfast before school for those who would like it. Students may come into the building starting at 7:40AM **ONLY IF THEY ARE COMING TO EAT THE BREAKFAST PROVIDED BY THE SCHOOL**. If students do not eat breakfast at school or have their own breakfast, they **CANNOT** come in until 8:05AM. Students may **NOT** be dropped off before 7:40AM. If your child walks, they must wait off of school grounds until 7:40AM. We do not have supervision before that time and cannot be responsible for students outside of school. The doors open at 7:40AM for breakfast and that is the first time students may enter. Breakfast closes at 8:00AM. At that time any students arriving, will be asked to wait in the school lobby until the 8:05 bell rings. **All students not eating breakfast will need to wait in cars or off property until 8:05AM.** Please note that we expect any students arriving early for breakfast to be eating and following directions. There will be a three strikes rule for breakfast. If there are 3 behavioral issues during breakfast your child will not be allowed to come in early for breakfast. As always, we will have bag breakfasts for any child coming into school after breakfast closes in the morning. Students can pick them up at the front door and take it to class to eat.

Birthday Treats - Reminder

Due to health concerns and scheduling, the Webb staff asks that families do **NOT** send in any food items in celebration of birthdays. If these items are sent in, they will be returned with the student at the end of the day. This policy is supported in the Hazel Park Student Handbook along with a few other policies around birthdays/food:

- *We ask that parents reserve any balloons, presents, and other party favors for home celebrations.*
- *Party invitations or gifts for classmates should not be brought to school to be distributed. Items such as these are of a personal nature and should be mailed home. The office is unable to release addresses and phone numbers of students.*
- *Food from outside vendors without prior approval from the principal may not be brought into the buildings (this includes lunches and breakfast).*



Birthdays at Webb

If you want to celebrate your birthday at school, we want to celebrate your day, too!

However, we have several allergies and health concerns we want to honor. Because of this, there will be **NO FOOD TREATS** at Webb for birthday celebrations. Instead, please consider bringing in a special novelty to share with the class.

Some ideas include:
stickers, bubbles, glow sticks, slime, bouncy balls, fidgets, bracelets, etc.

Open School

We are trying a new event at Webb this year. We are offering a free opportunity for families to get out of the house and enjoy some indoor activities at Webb this Saturday. Please see the information below if you are interested in attending. Please note that this event is for families and **a parent/guardian must stay with the students at the school during the event.**

WEBB ELEMENTARY
2100 WOODWARD HEIGHTS,
FERNDAL, MI 48220

OPEN SCHOOL

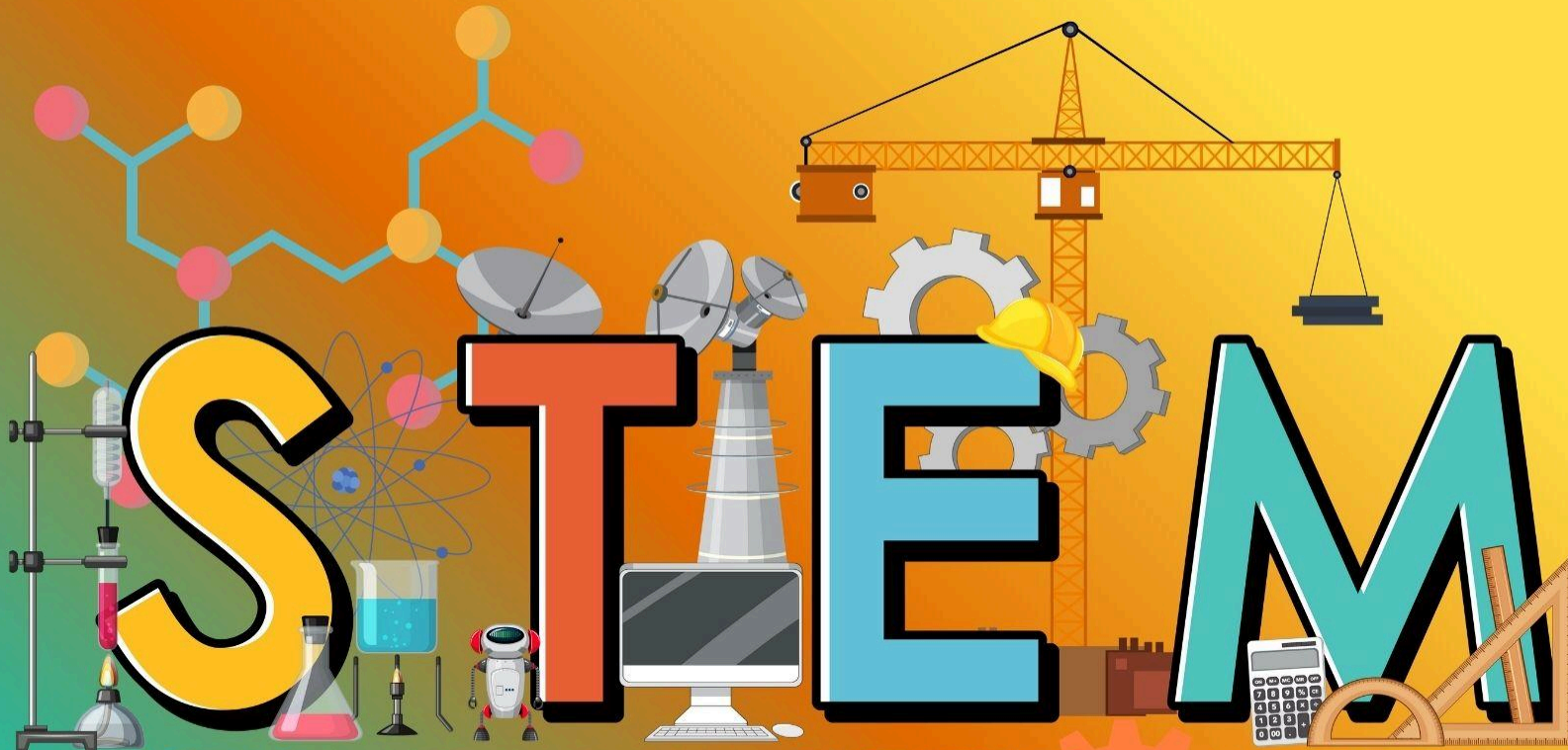
JANUARY 10TH 2026

10:00 AM - 12:00 PM

Activities, Crafts, and More!

JOIN US FOR OPEN SCHOOLS—A RELAXING, TWO-HOUR DROP-IN EVENT WHERE KIDS AND PARENTS CAN HAVE FUN, ENJOY CRAFTS AND ACTIVITIES, AND BEAT THE COLD TOGETHER! PLEASE ENTER THROUGH DOOR 5, AND REMEMBER THAT PARENTS MUST STAY WITH THEIR CHILDREN AT ALL TIMES. WE CAN'T WAIT TO SEE YOU THERE!





SCIENCE • TECHNOLOGY • ENGINEERING • MATHEMATICS

MATH AND STEM BOARD GAMES

CREATIVE ESCHER PUZZLES

K9 AND DUMMY 13 CONSTRUCTIONS

LEGO ARCHITECTURE DESIGN

DINO EXPLORATIONS SPIROGRAPH

MATH/ART CREATIONS

TUESDAYS 5-6PM

JANUARY 6- JANUARY 27

AGES 5+

\$40/4 WEEK SESSION

620 W. WOODWARD HGTS

248-547-5535



JOIN OUR BEGINNER CROCHET CLASS

Want to learn to crochet but not sure where to start?

This class is perfect for you!!

Learn basic crochet
stitches step-by-step

Practice right away with
guided help

Make your very first
crochet washcloth to
take home

You'll Get:

1 crochet hook
(yours to keep!)

Yarn for your project
Hands-on instruction

3 DATES TO CHOOSE
FROM

December 21, January
18 and February 15

\$15 PER CLASS

2-4pm



RSVP: Hazel Park Recreation Center
620 W. Woodward Hgts 248-547-5535



Hazel Park District Library

Baby Story Time

Free!



Wednesdays, 1:00 pm

(Older siblings are welcome)

No Storytime December 24 & 31

Baby Story Time supports early literacy and language skills by encouraging singing, playing, talking, and shared reading. Join us for fun stories, finger plays, and snuggling in a welcoming environment! This **FREE** program is geared toward babies, but older siblings are welcome.



123 E Nine Mile
Hazel Park, MI 48030
<http://hazel-park.lib.mi.us/>
248-546-4095



SCHOOL OF DENTISTRY

TITANS FOR TEETH MOBILE CLINIC IS COMING TO YOUR SCHOOL!

WEBB- MARCH 16TH- 20TH

REGISTER BY: MARCH 9TH

Dental Services Available:

- Exams
- Cleanings
- Sealants
- Fluoride Varnish
- Restorations (fillings, stainless steel crowns, pulpotomies, etc)
- Extractions (baby teeth)
- Referrals

DID YOU KNOW THAT DENTAL CAVITIES ARE ONE OF THE MOST COMMON CHRONIC DISEASES IN THE US? CHILDREN AND ADULTS SHOULD VISIT THE DENTIST EVERY 6 MONTHS TO PREVENT TOOTH DECAY!

Parents can sign up for the Mobile Dental Clinic by scanning the QR code or completing the consent form sent home from school.



Questions? Call 313-494-66453

